

SCHOOL EMERGENCY MANAGEMENT PLAN

October 2025



St Aloysius'
St Aloysius'
College College
Hornsey Lane, Hornsey Lane,
Highgate Highgate,
London
London N6 5LY

N6 5LY

Contents

1. Definition aims and scope of the Plan	page 3
2. Evacuation of the school site	page 4
3. School Journeys, Trips & Excursions	page 4
4. Lock Down Procedures	page 4
5. School Emergency Management Plan – Roles & Responsibilities	page 5
6. Available support	page 5
7. Emergency Action List	page 6
8. Further Guidance on Emergency Plans	page 10

Appendices

A. Evacuation & Sheltering	page 10
B. Lockdown Procedure	page 12
C. Emergencies Onsite	page 16
D. Emergencies Offsite – Educational Visits, Trips & Excursions	page 18
E. Stand-down and Recovery – Onsite & Offsite	page 21
F. Site Map	page 22
G. Event Log	page 24
H. Contact List	page 25
I. Dealing with the Media	page 26
J. Example grab bag contents	page 27
K. Accident / Incident Report Form	page 28

1. Definition, Aims and Scope of the Plan

1.1. Definition

An event or events, usually sudden, which involve experiencing significant personal distress, to a level which potentially overwhelms normal responses and procedures and which is likely to have emotional and organisational consequences.

1.2. Aims – The School Emergency Management Plan (SEMP) aims to:

- Provide a structured and co-ordinated approach to how the school will respond to an emergency situation;
- Assign roles & responsibilities for implementation of the plan and management of an incident / emergency situation;
- Provides procedures and templates to manage and record actions undertaken during an incident / emergency situation;
- Set out practical help that is available from Islington Council and other agencies, at short notice; and
- References sources of information and help from other agencies

1.3. Scope of the Plan – The Emergency Plan will provide support in response to incidents and emergencies which may occur both in and outside school for a variety of reasons leading to the following:

1.3.1. In School:

- Immediate evacuation (e.g., as a result of fire, flood, loss of utilities, bomb threat) or lockdown of school premises;
- Partial or full closure of the school at short notice and / or for an extended period of time (e.g., as a result of severe staff shortages, building damage, etc);
- Requirement for the school to 'hold' pupils beyond the normal end of the school day (e.g., in response to a request from police in relation to public safety, etc).
- Total or significant IT / Data loss / failure / theft;
- Support in response to the death, or serious injury, of a pupil, member of staff or other visitor on site through natural causes, suicide or accident
- Provision of mutual support / supporting aid in response to an Incident at a neighbouring school;

1.3.2. Outside School

- Loss, injury or death of pupil(s) and/or members of staff whilst on school journey, trip or excursions;
- The death or serious injury of a pupil or member of staff through natural causes, accidents or other significant criminal action out of school hours;
- A more widespread disaster in the community impacting on the school – e.g., public disorder, terrorism.

1.4. Activation of the plan

1.4.1. The plan will be activated as soon as the school is notified of an incident or event(s) requiring one or more of the emergency responses set out in 1.3 above. Activation of the plan should be made by the Headteacher or their designated deputy if they are not available.

1.5. Accident / Incident Reporting –

1.5.1. If there is a major incident or death, requiring the incident to be reported under the Reporting of Injuries, Diseases, Dangerous Occurrences Regulations 2013 (RIDDOR), the Council's Health, Safety and Wellbeing Team must be contacted by telephone as soon as possible following the major accident or incident (e.g., fire, explosion, death, asbestos release,

collapse of a structure or scaffolding, etc). The Council's Health, Safety & Wellbeing Team can be contacted on 020-7527-2230.

- 1.5.2. The accident / incident will also be immediately reported **to Islington's Insurance Services Team on 020- 7527-4262.**

2. Evacuation of the School Site

- 2.1. Upon sounding the fire alarm, the school will evacuate all persons on site (including pupils, staff, members of the public, contractors, etc) to an agreed muster point in line with their agreed evacuation process. In normal circumstances this will be **on the school playground and outside the gym.** In exceptional circumstances, the school may be required to evacuate to an offsite muster point which is **Thornbury Square Nursing Home.**
- 2.2. For all unplanned evacuations, the fire service should be contacted (if the fire alarm is not linked to an operation centre). Upon arrival of the fire service, the school must be able to provide maps, plans and locations of service isolation points, chemicals, asbestos, wet &/or dry risers. The Incident Manager and Premises team should ensure these are available upon request.
- 2.3. Following sweeps of the building and an account of all person's whereabouts, the headteacher will take one of the following decisions:
- Re-enter the building following assurance that there is no longer a risk (see 2.4 below)
 - Remain at the assembly point and await advice from the Fire Service.
 - Evacuate the school site to
 - **A neighbouring building– (St Josephs Catholic Church, Highgate Hill, London N19 5NE. Tel: 0207 272 2320)**
 - An agreed location as a temporary escape from the school premises; or
- 2.4. If the fire service are on site, they will liaise with the school's Incident Manager and will be responsible for authorising re-entry as appropriate and when safe to do so.
- 2.5. Appendix A provides more information regarding evacuation procedures to be followed.

3. School Journeys, Trips & Excursions

- 3.1. The Council's Health & Safety Manual provides detailed guidance on Educational Visits, including completion of risk assessments, roles & responsibilities and emergency procedures. The Health & Safety Manual can be found on <https://evolve.edufocus.co.uk/evco10/unknown.asp>
- 3.2. If an emergency or incident should happen during a school visit or excursion, the Headteacher or deputy headteacher **must** be notified immediately (following calls to emergency services). Parents of pupils involved must not be contacted prior to the headteacher being spoken to. Insurance Services (see appendix H for contact details) should also be notified immediately. If the emergency requires medical assistance or recovery during a trip abroad, the Insurance provider should be contacted on 020-7527-4252
- 3.3. **Residential visits** – The adults who are attending the residential visit must meet prior to the visit to go through all emergency procedures and risk assessments. The headteacher or deputy headteacher must be present at this meeting. This meeting must be minuted with a written note of the meeting copied to the headteacher.

4. Lock Down Procedures

- 4.1. Lockdown procedures are seen as a sensible and proportionate response to any external or internal incident, which has the potential to pose a threat to the safety of staff and pupils in the school. Procedures aim to minimise any disruption to the learning environment whilst ensuring the safety of all pupils and staff.
- 4.2. Depending on the urgency of the situation (e.g., in the instance of an "active shooter" on

site), staff and pupils should follow [run, hide, tell guidance](#) from the poster in the classrooms.

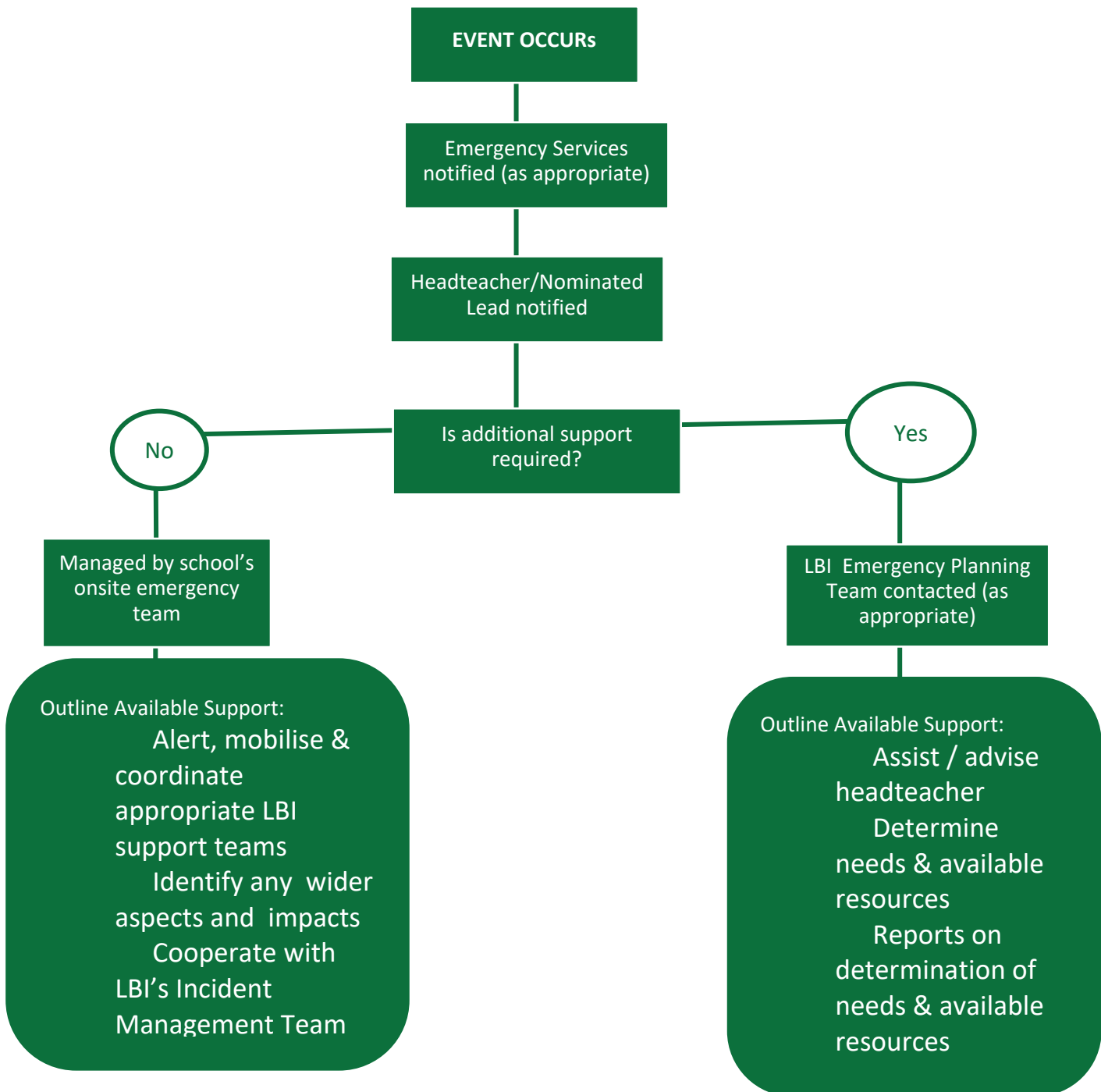
- 4.3. In the case of an emergency which requires a 'lock down', a signal will be given so that staff and children will return immediately to their classroom base where a register will be taken. Staff should notify the office immediately if anyone is missing.
- 4.4. The school will remain locked and everyone will remain in their bases until the Headteacher signals that staff and pupils may be released. Mobile phones are not to be used unless instructed by the headteacher.
- 4.5. If any staff and/or pupils are off site they should be contacted and instructed not to return to school until they are told that it is safe to do so.
- 4.6. Appendix B provides a detailed partial and full lockdown procedure.

5. School Emergency Management Plan (SEMP) Roles and Review

- 5.1. **Incident Manager** – In the event of an emergency or incident, the **Headteacher** will be the school's nominated Incident Manager. In the absence of the headteacher, the most senior member of staff on site will take on this role (SKI). This would normally be deputy headteacher or, in their absence, assistant headteacher or business manager. They will be responsible for managing and coordinating the incident and will be a key point of contact and communication between the school and staff, parents, pupils, Islington Council and other appropriate agencies / organisations. Section 7 below provides more detail regarding actions & responsibilities of the Incident Manager in the event of an emergency situation.
- 5.2. The **Chair of Governors**, or if unavailable, the vice-chair, will provide management assistance and support to the Incident Manager.
- 5.3. **School Emergency Management Team (SEMT)** – The Incident Manager will form a team consisting of a core of School Leadership Team members (up to 4) and, where necessary, supplemented by teaching, premises & administrative / office staff. The SEMT will be responsible for managing the school's response to the emergency / incident and undertaking identified tasks and activities. (PWH/SKI/EGA/CMA/GBR/BMC/ECO/ACH)
- 5.4. **Class teachers** will have an important role to play in managing critical incidents and will be the best person to deal with pupils in their class. In times of crisis, teachers must react as they feel is appropriate and there can be no easy formula for dealing with critical incidents. Ensuring good communication within school will help to manage the crisis effectively. Class teachers will be expected to:
 - Be aware of critical incident plan and procedures;
 - React as appropriate and follow instructions from the Incident Manager to maintain calm in their classes.
- 5.5. The **School's Health & Safety lead** and the **Governor with responsibility for Health & Safety** will review & update the SEMP annually and report to the Governing Body.
- 5.6. Appendices C and D provide more detail regarding specific actions for the above different roles at different stages of the emergency.

6. Available Support

- 6.1. In the event of a School related emergency, support is available should be sought from Islington Council. In the first instance, this will be a Senior Leadership & Management Adviser (see contacts under appendix H).
- 6.2. Further available support arrangements are summarised as follows:



7. Emergency Action List for the Incident Manager & School Emergency Management Team (SEMT)

Stage 1 - Initial Actions
<ul style="list-style-type: none"> ▪ Make every attempt to clarify exactly what has happened – assess the situation and determine what the likely impact is and what action is needed to mitigate, resolve or lessen the problem. ▪ Ensure that the Emergency Services have been contacted, if required.

Stage 1 - Initial Actions

- Set up and meet with the School Emergency Management Team (SEMT) to brief them of the facts and allocate roles & responsibilities. Nominate one member as On-Site Coordinator to oversee the SEMT on your behalf if you are called off site.
- Setup regular update & coordination meetings for the SEMT.
- Open and continue to maintain, a personal log of all factual information received, actions taken, and the time of those events.
- Contact the Chair of Governors:
 - Inform them of the incident / event and, if appropriate, of any support provided by The Diocese of Westminster / or Islington Council; and
 - Ensure that they are available to provide ongoing support / advice, as well as to be on standby to be available for interview by the Media.
- If deputising for the Head, if possible, try to contact and brief him/her.
- Consider whether the incident / event requires support from Islington Council.
- If so, contact one of the single point contact numbers listed in Appendix H and agree what support is required..
- **If during term time** – unless there is overwhelming pressure to do so, avoid closing the site & endeavour to maintain normal routines & timetables. [NB: In an epidemic or pandemic situation, the Health Protection Agency may take over incident management. If subject to police investigation, the Police may require that all or part of the site be cordoned for the preservation of forensic evidence. In these examples, the school may be required to close.].
- **If outside term time (or outside school hours)** – Arrange for:
 - The Premises Manager to open certain parts of the school as appropriate and to be available (and responsive) to requests.
 - Immediate Administrative / office support.
- **Communications:**
 - If the Incident attracts Media attention, it is possible that the school will be inundated with requests for interviews and statements. You may direct requests to Islington Council's Communications Team for comment.

If it is possible that you will be required to give a TV or Media interview, ensure you have a prepared statement of facts. Also, think about what you are wearing when you go into school (See appendix I).

NB: It is especially important that if names of those who may have been involved in the incident are known, DO NOT release or confirm them to anyone before those identities are formally agreed and parents are informed.

Follow the lead of the emergency services in this.

- Remember the School Office is likely to be the first point of contact for visitors. Ensure office staff know how to respond to queries and remind them to exercise caution in making comments and general conversation regarding the incident in the open office.
- Only give out information from prepared statements that will be made available
- Recognise the relevance of multi-cultural and multi-faith factors in the response.
- Maintain a record of calls received

Stage 1 - Initial Actions

- Take care when answering telephone calls early on. Be prepared to receive many telephone calls and have a script ready:

Outline Telephone Script – Informing Parents / Carers

I am (name) from (name of school). I am calling regarding (known facts of the incident).

Please be assured that we are doing everything we can to get back to normal as quickly as possible.

In the meantime, the school is / will be taking the following action:

- <<details of action, e.g. School closed / Normal routine / Other>>

You should take the following action:

- <<details of action, e.g. stay at home, come to collect your child, etc>>

If you are approached by the media, please refer them to the School.

We will contact you again <when> and <how>.

Outline Telephone Script for incoming calls from the media

Thank you for your call. Please refer any questions to the Council's Press Office (you don't have to give contact numbers)

- Remember that some calls could be bogus

Stage 2 – Once Established

General actions for the Nominated Lead, Onsite Coordinator and SEMT:

- All **SEMT will be wearing recognised hi vis jackets**
- Arrangements will be set up to control and manage visitors –their names to be recorded. Continually review site security
- Set up arrangements to enable accurate information to flow into and out of the school:
 - Identify sufficient staff to answer the many calls that could be received. If appropriate, the Council's Communications Team can also respond to incoming calls and/or will be able to assist with setting up a 'Help-Line'.
 - Maintain a record of calls received
 - Prepare brief, up-to-date statements for staff answering telephones and speaking to the public. The Council's Communications Team can help with this.
 - Direct all media calls to the Council's Communications Team or your nominated press & media lead.
 - Instruct staff and pupils not to speak to the Media.
 - Regularly update statements on your website and for outgoing voicemail messages with alternative contact numbers for parents, press etc.
 - Set up an independent telephone for outgoing calls only. A mobile phone can be useful.
 - Take care when answering telephone calls. Remind staff answering calls that some could be bogus
- Arrange for all staff, not just teaching staff, to be called in and, if necessary, briefed at an early stage. Subsequent and regular briefings (e.g., 2 per day for 10 minutes), should be held.
- Avoid the temptation to speculate or to hide facts when briefing staff and pupils.

Stage 2 – Once Established

- There is an expectation to arrange for all pupils to be told, in simple terms, at an early stage (ideally in small groups and initially by class teachers, wherever possible) in order to ensure perspective is maintained by all.
- Arrange, if appropriate, for SEMT members to each have a copy of the Next-of-Kin List.

Supporting Parents:

- Maintain regular contact with parents.
- If pupils are involved, contacting parents will be an important early task.
- Remember if it is a major incident, parents may well have already heard and it may be appropriate to invite parents to come to the school for briefing and support. This will need to be done with the utmost care.
- Avoid speculation to fill in sketchy details. Don't be afraid to say "I don't know – yet"
- If the Incident is away from school, seek Police advice whether parents should travel to the scene, or whether children should be taken home.

Supporting Staff:

- Maintain regular contact with all staff.
- Make a point of seeing that all staff involved know each other's roles & responsibilities.
- Be available to see staff when required.
- Be alert to adverse reactions by staff to the Event (Post Traumatic Stress Disorder).
- Be alert to staff who may be so affected that they will not be able to help support children
- Recognise, also, that if the burden of dealing with the situation falls disproportionately on a small number of staff, they too could need professional support.
- If the Incident is away from school, dissuade staff from driving parents to the scene.
- Remember to have regular breaks and advise others to do so.
- Always try to think of something positive to say to staff and respond positively to ideas and suggestions

Working with Islington's Leadership & Management Adviser

- Maintain liaison with Islington Council's nominated Leadership & Management Adviser for duration of Incident.

Stage 3 – Period Following the Close of the Incident

- Prepare report for the Chair of Governors to review the incident and its management, as well as to identify any lessons learned. .
- Contact Islington's Educational Psychology Service, if appropriate, for support and advice for staff and pupils.
- Arrange for a member of staff to maintain contact with any pupils either at home or in hospital.
- Make sensitive arrangements for the return to school, preparing a staged return if appropriate.
- Seek advice from Islington's nominated Leadership & Management Adviser and local faith group's regarding special assemblies, funerals, memorial services.

Stage 4 – Longer Term Issues

The effects of some incidents can continue for years. Thought will need to be given to the following:

- Working with Staff to monitor pupils informally
- Clarifying procedures for referring pupils and staff for individual help. Contact Islington's Educational Psychology Service for support regarding this.
- Recognise and, if appropriate, mark anniversaries
- Remember to make any new staff aware of which pupils were affected and how they were affected.
- Remember that legal processes, inquiries and even news stories may bring back distressing memories and cause temporary upset within the school.
- Remember that if the Incident does attract media attention, it is likely that interest will continue for many weeks.
- Remember to take time out for yourself, to reflect and to consider and evaluate lessons learned.
- Be aware that some Staff may also need help in the longer term.

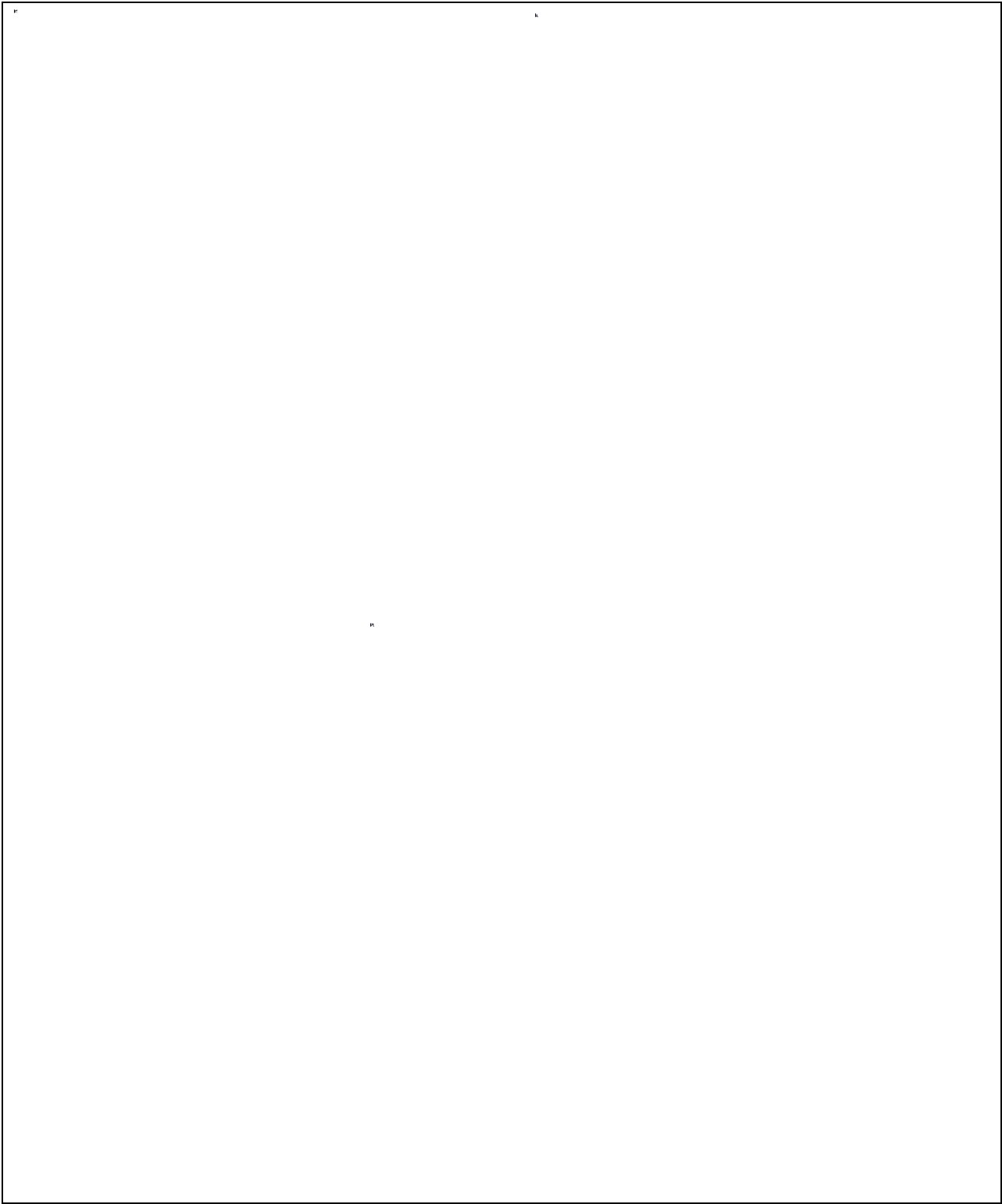
8. Further guidance on School Emergency Plans

The .gov.uk website provide further information and advice for schools on emergency planning. Go to: <https://www.gov.uk/guidance/emergencies-and-severe-weather-schools-and-early-years-settings>

Also see the Council's Health and Safety Manual for Schools – <https://evolve.edufocus.co.uk/evco10/unknown.asp>

Appendix A: Arrangements for Evacuation & Sheltering

Procedures for Evacuation
Use the fire escape routes
Evacuation Routes



Assembly Points – Primary assembly point	
Playground and the grass side of the gym area	
Assembly Points – Alternative assembly point #1	
Thornbury Nursing Home	
Assembly Points – Alternative assembly point #2	
Guide people towards St Joseph's Church grounds	
Accounting for pupils, staff & visitors: Procedure for use of registers, visitor books	
Staff and student list to be printed on a termly basis and should be kept in the emergency grab bags	

Appendix B: Procedures for Full & Partial Lockdown

1. Lockdown Signals / Instruction

Staff will be alerted to plan activation through agreed school procedure and verbal instruction. We will use silent communications and keep noise to a minimum, especially if the intruders are close by. Make sure any communication devices are silenced, secured and cannot be intercepted.

Signal for FULL lockdown	Message sent to all staff desktop PC's by NETSUPPORT NOTIFY. Message will say: FULL LOCKDOWN: INITIATE INVACUATION INDOORS! FULL LOCKDOWN:INITIATE INVACUATION TO SPECIAL VENUES!
---------------------------------	--

Signal for PARTIAL lockdown	Message sent to all staff desktop PC's by NETSUPPORT NOTIFY. Message will say: PARTIAL LOCKDOWN: INITIATE INVACUATION INDOORS! PARTIAL LOCKDOWN:INITIATE INVACUATION TO SPECIAL VENUES!
Signal for evacuation	Fire alarm system will be used
Signal for all clear	Message sent to all staff desktop PC's by NETSUPPORT NOTIFY. Message will say: STAND DOWN & RETURN TO ACTIVITY!

2. Communication arrangements

- 2.1. **Who communications will come from** – communication and instructions during a lockdown will come from – **Designated member of the senior leadership team**
- 2.2. **How communication will be managed** – Communication will be delivered to staff and students via a tannoy system, e-mail and or public address. Telephone or text messages, e-mail, website update to parents and other stakeholders.
- 2.3. **Who key points of contact will be** – communication and instructions will be delivered to – Headteacher, Chair of the governors, Business Manager, Premises Manager and class teacher where appropriate.

3. Responding to Different Situations

- 3.1. **Hostage situation** – If someone is taken hostage on the premises, if safe to do so, the school should seek to evacuate the rest of the site.
- 3.2.
- 3.3. **Who to Notify that Lockdown has been initiated**
 - Dial 999. Dial once for each emergency service that you require.
 - Islington Council to confirm that there is a lockdown in process and determine what support is available during this period.
- 3.4. **Partial Lockdown** – Partial lockdown' is a precautionary measure that puts the school in a state of readiness (whilst retaining a degree of normality) should the situation escalate. It may be required for different reasons (e.g., as a result of a reported incident / civil disturbance nearby in the local community with potential to pose a risk to staff and pupils in the school or as a result of a warning being received regarding the risk of air pollution, etc).

Immediate action:

- When the partial lockdown signal is given (see section 1 above), all outside activity to immediately cease. Pupils and staff must return to the building and remain there with external doors and windows locked. Rooms most suitable for lockdown:
Classrooms/Main Hall.6th Form Common Room/Sports Hall/Offices
- Movement may be permitted within the building dependent upon circumstances, but this must be supervised by a member of staff.

- Once all staff and pupils are safely inside, senior staff will conduct an on-going and dynamic risk assessment based on advice from the Emergency Services. The outcome of this will be communicated to staff and pupils.
- In the event of an air pollution issue, air vents (where applicable & possible) should be closed as an additional precaution. Emergency Services will advise as to the best course of action in respect of the prevailing threat.

3.5. **Full Lockdown** – When the 'Full lockdown' signal is sounded, this signifies an immediate threat to the school and may be an escalation of a partial lockdown.

Immediate action:

- Pupils who are outside of the school buildings should be brought inside as quickly as possible and return to their classrooms, unless this endangers them and others. (Classrooms/Main Hall.6th Form Common Room/Sports Hall/Offices)
- As instructed and only where safe to do so, pupils who cannot safely return to the school building will be evacuated to an identified assembly point / buddy school.
- Those already inside the school should remain in their classrooms.
- Teachers are responsible for the class they are teaching when a lockdown is announced. They should encourage pupils to sit quietly and keep calm.
- To increase protection from attack, staff should:
 - Lock / block external and, depending on the circumstances, internal classroom doors to prevent any intruder entering the building or classroom. Where necessary, also move furniture to obstruct doorways
 - Keep out of sight – draw curtains / blinds; turn off lights; stay away from windows and doors. Sit on the floor, under desks / tables or against a wall. Depending on the situation, pupils may need to be instructed to hide or disperse if this will improve their safety.
- Ensure that pupils, staff and visitors are aware of an exit point in case an intruder manages to gain access
- Take a register / head count and be ready to provide this to office staff. Check for missing / injured pupils, staff and visitors. Where a pupil, staff member, visitor cannot be accounted for, a senior member of staff should be notified and, if safe to do so, an immediate search should be instigated.
- Remain inside until the senior member of staff on site has issued an all-clear (see section 1 for all clear signal), or unless told to evacuate by the emergency services.
- Notify parents as soon as it is safe and practicable to do so via phone call or text messaging services. Information given should reassure & inform them that:
 - The school is in full lockdown and that nobody will be allowed in or out of the school site.
 - The school understands their concern for their child's welfare, and what it is doing to ensure his/her safety.
 - Pupils will not be released to parents until the lockdown is formally over.
 - Wait for the school to contact them when it is safe for them to come to collect their child/ren and where this will be from.
 - They should not come into the school as this could interfere with the emergency service's access to the site and may also put themselves and others in danger
 - They should not contact the school unless necessary, as this could tie up telephone lines needed to communicate with the emergency services.

- During the lockdown, keep agreed lines of communication open, but do not make unnecessary calls to the central office as this could delay more important communication.

3.6. Notwithstanding the above, in emergency situations, involving an “active shooter” or similar, the full lockdown signal may not be given. In this instance, staff and pupils should immediately run away from the known direction of the threat following the run, hide, tell guidance from the National Counter Terrorism Security Office.

4. Emergency Services

4.1. It is important to keep lines of communication open with Emergency Services as they are best placed to offer advice as a situation unfolds. The school site may or may not be cordoned off by Emergency Services depending on the severity of the incident that has triggered the Lockdown. Emergency Services will support the decisions of the Headteacher regarding the timing of any communication to parents.

5. Lockdown Drills

5.1. It is of vital importance that the school's lockdown procedures are familiar to all members of the school staff and pupils. **To achieve this, it is good practice for a lockdown drill to be undertaken at least once a year.**

Example text for School Newsletter or Website Regarding Lockdown Procedures

As part of our safeguarding procedure, we have developed a procedure for partial and full "lockdowns" of the school site.

Lockdown procedures are important and would be used in response to an internal or external incident which could be a threat to the safety of staff and children & young people in the school.

Lockdown procedures may be activated in response to any number of situations – for example:

- A reported incident, disturbance in the local community
- An intruder on the site
- A warning being received regarding a local risk of air pollution (smoke plume, gas cloud etc)
- A major fire in the vicinity of the school
- The close proximity of a dangerous dog roaming close

In the event of an actual lockdown, the safety of pupils and staff will be our primary responsibility. If a lockdown is initiated, parents will be notified by a text message as soon as possible.

Our lockdown procedure has restricted access. If you would like to see a copy, please contact the school office.

6. More information

6.1. The National Counter Terrorism Security Office has published guidance on [Dynamic Lockdown procedures](#)

Appendix C: Emergencies in School Premises / Site – Implementation

(i) ACTIVATION

This is not an exhaustive list of actions; the Incident Manager / Headteacher and the School Emergency Management Team (SEMT) should continue to consider their response with the aim of returning the site to normality as quickly as possible.

Action list for Incident Manager
<ul style="list-style-type: none"> ▪ Ensure that accurate, factual information is available for those arriving at the scene. ▪ Liaise with the police, fire and ambulance services, Islington Council, and other agencies that may become involved. Act as the main contact to coordinate response and give your contact details. ▪ Inform the chair of governors. ▪ Inform all staff, and parents of any injured pupils. Decide how to inform other parents. ▪ Ensure all staff maintain a central log of actions and decisions taken. ▪ Allocate tasks below between SEMT as appropriate. ▪ Identify who will be recording staff's personal and site costs and collecting the incident logs
Action list for SEMT
<p>Welfare</p> <ul style="list-style-type: none"> ▪ Take actions to secure the immediate safety of pupils and staff – this may include evacuation or keeping pupils and staff inside the building (sheltering). ▪ Establish the whereabouts of all pupils, staff, and visitors using timetables, registers and the visitor's book, and make a list of those unaccounted for.
<p>Communications</p> <ul style="list-style-type: none"> ▪ Consider emergency communications needs. Dedicate lines for incoming and outgoing calls and arrange extra support for school office / reception. If necessary, seek support from LBI via their nominated Leadership & Management Adviser. LBI may also be able to provide a contact point for enquiries from the public in the event of a major emergency. ▪ Line to be used for incoming calls only: 07946491473..... ▪ Line to be used for outgoing calls only:...07488258981.....
<p>Media management</p> <ul style="list-style-type: none"> ▪ If possible, avoid responding to media enquiries and direct them to either the Council's Communications Team / the school's Press & Media lead or the police if they are present for a statement. ▪ Liaise with the Council's Communications Team as quickly as possible, and work with them and the Incident Manager to decide the information for release to the media. ▪ Ensure that any media access to the site, staff and pupils is controlled. In a major emergency, the police can deal with the press and prevent intrusion onto the site. ▪ Be aware of the potential problems caused by the spread of misinformation through pupil and/or staff use of social media.
<p>Premises</p> <ul style="list-style-type: none"> ▪ Ensure access to site for emergency services ▪ Open/close parts of site as required, and turn off water, gas and electricity supplies if necessary – see 'school site plan', appendix F ▪ Ensure and maintain the security of the school premises

(ii) IMPLEMENTATION

Action list for Incident Manager

- Provide regular briefings for staff, and continue to liaise with the emergency services and LBI's nominated Leadership & Management Adviser.
- Try to maintain normal routines as far as possible.
- Tell the staff involved to prepare a written report of their involvement, noting events and times. LBI's Human Resources can advise on reporting procedures and inform trade unions if necessary.
- Accident report should be completed and, in the event of serious injuries or a fatality, the Health and Safety Executive should be informed within 24 hours.
- Meet regularly with SEMT and allocate out tasks below.

Action list for SEMT

Communications

- Inform pupils, in groups as small as practicable, considering the best way to impart tragic news (advice is available from the HLT Educational Psychology Service).
- Inform parents of children not directly involved in the incident, as decided by the Incident Manager. Use any existing arrangements, such as text messaging / telephone cascades, for contacting parents quickly and efficiently.
- **Media management**
 - Liaise with the Council's Communications Team to prepare press statements, as required, to be agreed by the Incident Manager.
 - Agree an ongoing strategy for dealing with the press & media.
 - Be prepared to be interviewed by the press if necessary.

Welfare

- Establish a staff rota and ensure that staff take regular rest periods
- Identify those pupils and/or staff who are badly affected, and who need extra support.
- Make arrangements for reuniting pupils with their parents.
- Take account of religious and cultural factors, and consider contact with leaders of local faith communities. In particular, some faiths may wish to hold funerals within 24 hours of a death, so swift and sensitive enquiries must be made to ascertain whether it would be appropriate for representatives of the site, including pupils, to attend.

Premises

- Establish a safe and secure base for the SEMT
- Arrange a place to receive parents of children involved
- Receive visitors to the school, ensuring they sign in and out and are issued with identification badges.

Incident / Event Facts		
Local Emergency Services informed?		
Next of kin informed? If yes, how & by whom?		
Where are the affected people now?		
Will the affected people be taken elsewhere?		
Name & location of involved hospitals		
Number of People on the visit:		
Pupils:	Teachers:	Other Adults:
Arrangements for pupils on the trip , but not directly involved in the incident		

(ii) IMPLEMENTATION

For advice on dealing with emergencies on educational visits please refer to LBI's Health & Safety manual for schools – <https://evolve.edufocus.co.uk/evco10/unknown.asp>

This section contains actions the School Visit Lead Officer should consider. It is not, however, intended to be an exhaustive list. Incident circumstances, such as its scale, will determine the response provided by the site and the level of involvement required from the local authority.

Considerations for Incident Manager (headteacher) in liaison with School Visit Lead Officer

Communication
<ul style="list-style-type: none"> ▪ Inform site staff as appropriate, depending on the time and scale of the incident. ▪ Contact LBI Leadership & Management Adviser for details of the support available that would be coordinated by the LBI Incident Management Team. It includes: <ul style="list-style-type: none"> ○ Assistance at site or at the location of the incident by HLT Senior Manager and/or others ○ Onsite support in a major incident from the Council's Communications Team, including help with press statements and interview briefings ○ For an incident occurring in another UK local authority, establishing links with that authority or, for an incident occurring abroad, communication via the Foreign Office, to British Consulate, foreign police, etc. ○ Advice regarding insurance matters. ▪ Consider emergency communications needs. Dedicate lines for incoming and outgoing calls and arrange extra support for reception if required. <ul style="list-style-type: none"> ○ Line to be used for incoming calls only: 07946491473 ○ Line to be used for outgoing calls only: 07488258981 ▪ Inform parents of any other pupils on the visit but not directly involved in the incident. Decide which parents should be informed and by whom and contact them as appropriate. Parents should first hear of the incident from the school (or from the party leader), not from hearsay or from the media. Information given must be limited until the facts are clear and all involved parents/next of kin are informed.

- Inform pupils and staff at site and their parents. Decide what information you should give. Remember that information given must be limited until the facts are clear and all involved parents/next of kin are informed. In the event of a tragic incident, consider seeking support from the LBI Educational Psychology Service about the best way to inform pupils and to support them afterwards.
- **Staff, pupils and parents should be told not to share information with others (particularly via use of social media) or to talk to the media.**
- Inform the Chair of Governors. (if appropriate)
- **Media Management**
 - Introduce, if necessary, controls on site entrances and telephones.
 - At least initially, the site is advised to avoid responding to media enquiries and direct these to the Council's Communications Team.
 - Liaise with the Council's Communications Team as early as possible, and work with them to prepare a press statement.

Premises

- Consider arrangements required in order to receive people who may be arriving at the site, such as parents of children involved, media, and emergency services.
- Consider resources required and their location in order to be able to respond efficiently to the incident.

Reporting of accidents

- Tell the staff involved to prepare a written report noting events and times. Inform the LBI Human Resources who will advise on reporting procedures and inform trade unions if necessary. Accident report forms should be completed and, in the event of serious injuries or a fatality, the Health and Safety Executive should be informed within 24 hours.

Appendix E: Stage 3 – Stand-down and Recovery (for both school premises & educational visits)

When the emergency services have left the site, or in the case of an incident on an educational trip, when pupils and staff have returned home and media interest has subsided, the site can begin the recovery process.

A range of support will continue to be available from across the Diocese and the Local Authority. To access this, the Headteacher / Site Manager should work with LBI's Leadership & Management Adviser to determine what support is appropriate & available. The Leadership & Management Adviser can also support the school to develop a recovery plan for the site.

There may be formal inquiries, or even police investigations into the incident, which may continue for some time and require the cooperation and support of site staff, pupils and parents.

Recovery plan

As soon as possible after the emergency:

- Arrange debriefing meetings for the Incident Manager and School Emergency Management Team. Review actions to date and allocate further required activity.
- Arrange debriefing meetings for staff and pupils
- Identify and support high-risk pupils and staff
- Promote discussion of the emergency in class
- Consider the need for individual or group support
- Help affected pupils and staff to come back onto site
- Identify and consider legal implications and seek advice appropriately
- Initiate a review of the site emergency plan, evaluating the sites response and feeding in any lessons learnt
- Liaise with parents regarding plans for attendance / representation at funerals and / or memorial services

In the longer term:

- The impact of some incidents can continue for years, so thought may need to be given to ongoing identification and support measures for both pupils and staff who are affected.
- Remember that legal processes, enquiries and news stories may bring back distressing memories and cause upset within the site.
- Remember to make any new staff aware of which pupils were involved and how they were affected.
- Consult and decide on whether and how to mark anniversaries.

Appendix F: Site Map for School

Appendix G – Event Log

	<i>Add rows where necessary</i>			

Appendix H: Contact List – useful individuals & organisations

The school must ensure that an accessible and current contact list is always available.

LBI requires the School's headteacher to speak to the Director of Education as soon as possible in the event of an emergency or incident.

Emergency / Incident Contact List –

Designation	Name	Email	Telephone
School Headteacher	Ms. Paula Whyte	Whyte.p@sta.islington.sch.uk	07906134395
Chair of Governors	Mr Paul Lasok		02075617800
Assistant Headteacher	Ms Sophia Kisten	Kisten.s@sta.islington.sch.uk	07714263557
Business Manager	Sadia Salami	Salami.s@sta.islington.sch.uk	07956698627
School Premises Manager	Brendan McDermott	mcdermott.b@sta.islington.sch.uk	07488258981
Office Manager	Lorna Jones	jones.l@sta.islington.sch.uk	07941846239

Emergency / Incident Contact List – LBI/Other National Numbers

Designation	Telephone
Islington Emergency Planning Team	020 7527 2000
Corporate Health and Safety	020 7527 2230
Education Welfare	020 7527 5833
LBI Communications Team	020 7527 2307
Children Services	020 7527 5768
Risk and Insurance	020 7527 4262
The Foreign Office	020 7270 1500
Environment Agency	0800 80 7060
Met Office Weather Call	09014 722062
Gas	0800 111 999
The Samaritans	08457 909090
Teacher Support Network	08000 562 561

Emergency / Incident Contact List – Other useful contacts

Designation	Name	Email	Telephone
Security Company	Key Holding Company		03707706880
Add rows as required			

Appendix I: Dealing with the Media

During a major incident, it is important to provide regular and relevant messages and media statements. In all instances, any message must be clear, releasing information that is helpful and informative, as well as legally appropriate. It should always be assumed that statements that are provided to parents & carers are also likely to be picked up by the press and wider public. The Council's Communications Team can help with this, providing essential media relations support in the event of an emergency or incident.

All community schools must direct all media enquires through the Council's Communications Team. School staff should not talk to the media, instead directing any query to the Council's Communications Team.

The school should nominate a contact to work with the Council's Communications Team. This will be the designated On Site Co-Ordinator for the emergency / incident.

The **Council's Communications Team** will:

- Be formally responsible for emergency communication with the press and media.
- Provide regular status updates for the press, members of the public and parents – including through use of social media.
- Brief and support headteachers and Chairs of Governors prior to press interviews and statements.
- Brief staff answering telephone enquiries and setting up voicemail messages.
- Provide hotline and call centre facilities should it be necessary.
- Provide press only hotline, should it be necessary
- Liaise with Press Offices in the emergency services and other partner agencies (as required).

LBI's Marketing Team will work closely with the school and the Council's Communications Team to promote agreed communications and status updates for staff, parents and members of the public.

Potential for Situation Escalation:

The School's Emergency Management Team, with input from the Council's Communications Team and LBI Leadership & Management Advisers, will monitor the event and decide if the issue is winding down or whether preparation for more complex developments is required.

Where assessment of the event highlights the potential to adversely affect the reputation, image or brand of the school on a significant scale, LBI's Director of Education (or their nominated representative) must be immediately updated and kept informed of developments / activity on an ongoing basis.

Contacting the Council's Communications Team

Email	media.team@islington.gov.uk
Telephone	0207 527 2307
Telephone – out of hours	07769 163 303

Appendix J – Grab bag contents

The grab bag is an emergency kit designed to keep necessary resources and emergency equipment in one pre-designated bag ready for immediate use. The grab bag should be stored where it can be easily collected in the event of an evacuation or drill and carried to the assembly point. A copy of the school's business continuity plan will be included in the grab bag. Due to the size of the school, we are required to stock at least emergency kit.

School Emergency Kit Contents:

- Contact details for staff & students (Updated on a termly basis)
- Charged mobile phone (& charger)
- First aid kit
- Megaphone
- Whistle
- Any other items, the school deems necessary to manage in the event of an incident

Appendix K – LB Islington Accident / Incident Report Form**A. Notification to The London Borough Islington Health and Safety team**

Incidents that need reporting include:

- All deaths must be reported immediately to the Health, Safety and wellbeing team by phone with this form completed and sent soon after
- All staff, members of the public (parents) and contractor accidents/ incidents
- Major pupil accidents / incidents including attending Hospital after the accident, broken limbs, nasty head injuries

The Health, Safety and Wellbeing team phone number is 020 7527 2230.

B. Accident/Incident details		C. Person directly affected	
Date of incident:	/ /	Category:	<input type="checkbox"/> Staff <input type="checkbox"/> Pupil
Time of incident:	: (24hr clock)		<input type="checkbox"/> Visitor <input type="checkbox"/> Contractor
School:		Position held: (staff)	
Exact location: e.g playground, stairwells		Year group: (pupil)	
		Gender:	<input type="checkbox"/> Male <input type="checkbox"/> Female
		Date of birth:	/ /
		Forename:	
		Surname:	
		Address:	
Incident classification:	<input type="checkbox"/> Work related Ill health <input type="checkbox"/> Injury <input type="checkbox"/> Incident e.g. violence / abuse	Post code:	
		Home tel. no:	
		Work tel. no:	

D. Full Description of the Accident / Incident

E. Immediate Action Taken to Prevent Reoccurrence

F. Injury summary	
Minor Cuts	<input type="checkbox"/> Yes <input type="checkbox"/> No
Cuts needing stitches	<input type="checkbox"/> Yes <input type="checkbox"/> No
Bruises/grazes	<input type="checkbox"/> Yes <input type="checkbox"/> No
Strains/sprains	<input type="checkbox"/> Yes <input type="checkbox"/> No
Fracture	<input type="checkbox"/> Yes <input type="checkbox"/> No
Dislocation	<input type="checkbox"/> Yes <input type="checkbox"/> No
Burns	<input type="checkbox"/> Yes <input type="checkbox"/> No
Electric shock	<input type="checkbox"/> Yes <input type="checkbox"/> No
Headache/nausea	<input type="checkbox"/> Yes <input type="checkbox"/> No
Inflammation	<input type="checkbox"/> Yes <input type="checkbox"/> No
Loss of consciousness	<input type="checkbox"/> Yes <input type="checkbox"/> No
Loss of sight	<input type="checkbox"/> Yes <input type="checkbox"/> No
Multiple injuries	<input type="checkbox"/> Yes <input type="checkbox"/> No
General pain	<input type="checkbox"/> Yes <input type="checkbox"/> No
Punctures	<input type="checkbox"/> Yes <input type="checkbox"/> No
Scalds	<input type="checkbox"/> Yes <input type="checkbox"/> No
Other (state)	

G. Part of body injured	
Head	<input type="checkbox"/> Yes <input type="checkbox"/> No
Face	<input type="checkbox"/> Yes <input type="checkbox"/> No
Eye	<input type="checkbox"/> Left <input type="checkbox"/> Right
Shoulder	<input type="checkbox"/> Left <input type="checkbox"/> Right
Arm	<input type="checkbox"/> Left <input type="checkbox"/> Right
Hand	<input type="checkbox"/> Left <input type="checkbox"/> Right
Finger	<input type="checkbox"/> Left <input type="checkbox"/> Right
Which finger	
Torso	<input type="checkbox"/> Yes <input type="checkbox"/> No
Pelvis	<input type="checkbox"/> Yes <input type="checkbox"/> No
Leg	<input type="checkbox"/> Left <input type="checkbox"/> Right
Foot	<input type="checkbox"/> Left <input type="checkbox"/> Right
Toe	<input type="checkbox"/> Left <input type="checkbox"/> Right
Which toe	
Back	<input type="checkbox"/> Yes <input type="checkbox"/> No
Other (state)	

H. Was the injury

I. About the accident

Please tick the box that best describes the accident	
A fatality?	<input type="checkbox"/> Yes <input type="checkbox"/> No
A major injury?	<input type="checkbox"/> Yes <input type="checkbox"/> No
To an employee requiring over-7-days of absence?	<input type="checkbox"/> Yes <input type="checkbox"/> No
To a pupil or visitor requiring attendance at hospital?	<input type="checkbox"/> Yes <input type="checkbox"/> No
J. Absence	
First day of absence	/ /
Date returned to work	/ /
No. of days absent	
K. Did the injured person	
Remain in hospital for more than 24 hours?	
Need resuscitation?	
none of the above	
L. (for H&S Office use)	
Reported by:	
Reported on:	

Please tick the box that best describes the accident	
Hit by a moving vehicle	<input type="checkbox"/> Yes <input type="checkbox"/> No
Contact with moving machinery	<input type="checkbox"/> Yes <input type="checkbox"/> No
Hit by a moving, flying, falling object	<input type="checkbox"/> Yes <input type="checkbox"/> No
Injured whilst handling, lifting, carrying	<input type="checkbox"/> Yes <input type="checkbox"/> No
Hit something fixed	<input type="checkbox"/> Yes <input type="checkbox"/> No
Drowned or asphyxiated	<input type="checkbox"/> Yes <input type="checkbox"/> No
Contact with electricity	<input type="checkbox"/> Yes <input type="checkbox"/> No
Trapped by something collapsing	<input type="checkbox"/> Yes <input type="checkbox"/> No
Assaulted by a person	<input type="checkbox"/> Yes <input type="checkbox"/> No
Exposed to, or contact with, harmful substance	<input type="checkbox"/> Yes <input type="checkbox"/> No
Exposed to fire or an explosion	<input type="checkbox"/> Yes <input type="checkbox"/> No
Injured during Play / sports activity	<input type="checkbox"/> Yes <input type="checkbox"/> No
Other, please state:	

M. Form Approval & Sign Off	
Form completed by:	Dated :
Position:	

RUN	HIDE	TELL
Escape if you can	If you can't RUN, HIDE	Call 999 - What do the police need to know?
Consider the safest options	Find cover from gunfire	Location - Where did you last see the suspects?
Is there a safe route? RUN: if not HIDE	If you can see the attacker, they may be able to see you	descriptions - Describe the attacker, numbers, features, clothing, weapons etc
Can you get there without exposing yourself to greater danger?	Cover from view does not mean you are safe, bullets go through glass, brick, wood and metal	Further information - Casualties, type of injury, building information, entrances, hostages etc
Insist others leave with you	Find cover from gunfire e.g. substantial brickwork/heavy reinforced walls	Stop other people entering the building if it is safe to do so
Leave belongings behind	Be aware of your exits	
	Try not to get trapped	
	Be quiet, silence your phone	
	Lock/barricade yourself in	
	Move away from the door	