



# **SIXTH FORM**

---

# **PROSPECTUS**

---



# **ST ALOYSIUS'**

# **COLLEGE**



# WELCOME

We look forward to welcoming our new students in September. Every student who comes to St Aloysius' College can expect a warm welcome from the Sixth Form Team, the staff and other students. The fantastic atmosphere and happy, supportive environment are two of the key factors that make this Sixth Form so well-loved by students and staff alike.

We constantly strive to help the students develop into young adults who are well-adjusted, well-educated, and who are positive role models in the school and local community. We have an excellent Higher Education record, with the vast majority of students going to university, including top Russell Group institutions. We continue to promote an aspirational attitude in the students, helping them to get to where they want to go.

Ms C. Mauris-Blanc  
Head of Sixth Form





# OUR ETHOS

Our Sixth Form presents you with a unique opportunity to further your studies in a first-class learning environment. The Sixth Form is a distinct group of students that forms an extension of our successful school and tradition of 'Achieving Excellence with Care'. St Aloysius' College students and staff work together to ensure that every student fulfils their potential. Attention to personal development and outstanding academic achievement enables our students to progress to higher education and successful future careers.

As a Sixth Form student you will work in partnership with your teachers, and develop relationships with your tutors that are supportive and based on mutual respect. Learning in smaller classes, you will be encouraged to read beyond the curriculum, to work and think independently, and to be self-disciplined in your studies - essential skills for university and beyond. We have highly committed, dedicated teaching staff that love their subjects and will work hard for you. We assume you will want to work hard for yourself. The atmosphere of the Sixth Form is formal and mature with greater independence for students to take responsibility for their own learning.

There will be an expectation that Sixth Form students maintain high standards of behaviour, appearance and dedication to study, acting as positive role models for the lower school boys. Students in our Sixth Form will be encouraged to grow their mind set, this will be done through a weekly programme of form time sessions on a variety of activities for developing student commitment, motivation and productivity. In addition to this, students will play an active and leading role in our comprehensive charity programme, as well as our numerous liturgical opportunities. As a Catholic community we endeavour to respect whatever faith tradition people come from, and will support all members of our community in their faith journey.





# THE SIXTH FORM

Our academic programme prepares students effectively for top universities and careers, focusing on providing depth as well as breadth. As students you will benefit from the use of a dedicated common room area, which includes space for independent learning and private study. As a Sixth Form student you will be expected to follow a professional dress code that sets an example to others. You will be encouraged to take up positions of responsibility within the whole school community and develop your leadership skills.

Independence and responsibility go hand in hand. In choosing to attend this Sixth Form, we insist you are committed, enthusiastic, mature and cooperative. The positive relationship between students, teachers and parents is essential as we support you to flourish in your studies and extra-curricular interests.

## **Academic Life**

The Sixth Form offers a wide range of academic A Level courses. We also offer a range of Level 3 vocational courses. In addition to a wide range of subjects on offer in the Sixth Form there are opportunities for you to be involved in exciting and challenging activities outside the classroom. Students are encouraged to take full advantage of the proximity of the School to central London and the easy access to cultural enrichment offered by world-class institutions. In the Sixth Form, your personal and social progress as students is crucial to the success of future UCAS (the UK central organisation through which applications are processed for entry to Higher Education) applications. The Sixth Form will provide you with a platform to demonstrate your skills and achievements, and to develop as well-rounded young adults.

## **Course Choice and Structure**

Students who choose the academic A Level route will typically study three subjects. They should choose these carefully and consider their future aspirations, academic strengths from their GCSE qualifications and which subjects interest them most. The combination of A Level subjects is also important; applicants will be invited to attend a consultation meeting with staff during the spring term to offer advice and guidance. Typically, students would complete Year 12 and 13 with three A Levels. Some high achieving students will be able to complete four A Levels depending on academic achievement.

Students who prefer a more vocational route will embark on a combination of three, level three BTEC subjects. These courses will be assessed through coursework assignments and exams throughout the two years and lead to final qualifications that will each be equivalent to three A Levels. Subject leaders will be pleased to discuss options with you.

# EXPERIENCE



“Students work collaboratively in the Study Room,  
supporting each other’s learning”  
OFSTED 2018

## Support and Guidance

There is a strong pastoral system of support, with smaller tutor groups. This helps students to prepare for university life, by learning how to study independently and use time effectively. Every student will be part of a form group. Experienced and committed tutors will help students with every aspect of their development, both pastoral and academic. Form time is spent discussing current affairs, study skills, higher education research and talking to the form teacher about any issues arising from their studies. The daily contact between students and tutors ensures close communication and attention to their learning needs at all times.

## What can you expect from us?

- Subject expertise delivered in an innovative and exciting way
- A strong pastoral support programme to help guide you through Sixth Form & beyond
- A wide ranging enrichment programme to broaden your experience
- Guidance and support as you choose university courses & consider your career choices
- Academic mentoring and tracking to ensure steady and impressive progress
- Support from a growing alumni network of old St Aloysius’ College boys and girls

## What do we expect from you?

- A mature and responsible approach to life in the Sixth Form
- Adherence to our rules and regulations
- A full and engaged approach to study
- To listen to others and respect their point of view
- To treat other students, staff and external visitors with respect and consideration
- To treat the building and equipment with respect
- To develop into self-motivated, thoughtful, independent learners
- To act as role models for the rest of the school
- To fulfil your true potential



# CAREERS

The Careers Department offers information, advice and assistance, not only with a selection of universities and potential courses, but also on apprenticeships and school leaver's schemes. Careers staff work with students one-to-one, identify their skill set, build a robust CV, complete applications for internships and plan work experience. Sessions are delivered on Student Finance, Scholarships and Bursaries, along with information on studying abroad and gap year opportunities. Regular themed careers events are on offer and students can arrange top-up career profiling, mock interviews and make use of the extensive careers resources.

## Higher Education Preparation

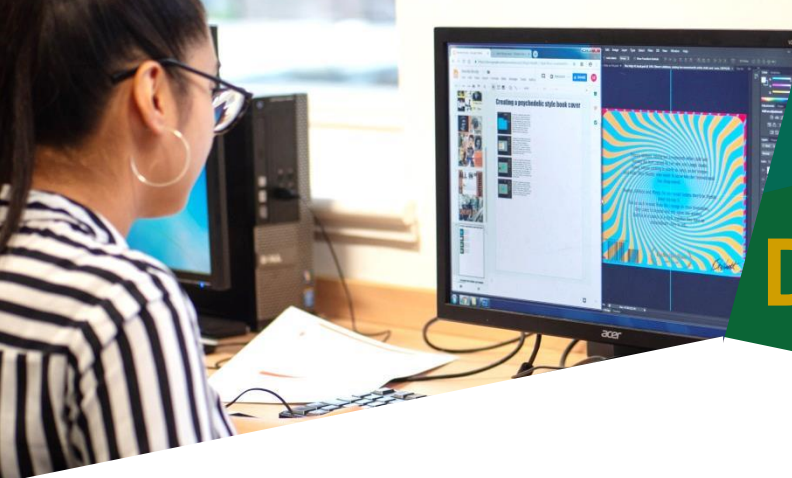
This starts early in Year 12 with talks on Higher Education, an introduction to the university application website (UCAS), and visits to universities and higher education fairs. At the end of Year 12, with further advice on writing personal statements and student finance, our Sixth Formers are equipped with the knowledge and skills to make considered and informed decisions on their post-A level career. Most students apply to university or specialist further education courses (such as Music or Art) at the beginning of Year 13. There is a comprehensive range of advice available to guide students through this process. An experienced Sixth Form team will support students with their Personal Statements and UCAS applications.

Students applying to universities such as Oxbridge, which require UKCATS, LNAT, BMAT admissions tests and interviews, receive specialist training and support, both from the Sixth Form team as well as within academic departments.

With competition for university places intense, we ensure that in Year 13 our students make wise choices and submit the very best applications. Students embark on a 1 week work experience placement in the summer term of year 12. Students are challenged to show independence through the 'self-find' system for placements, supported by their tutor and teacher responsible for work experience. Students will be prepared for the challenges of higher education admissions, competitive employment, and apprenticeship opportunities through mock interviews. St Aloysius' College Sixth Form is grateful to its network of expert professionals from a range of industries who have committed to supporting our students.

*"Students benefit from a good programme of careers advice,  
which includes visits to universities and businesses"*

OFSTED 2018



# DESTINATIONS

As a Sixth Form we work hard to ensure that all students maximise both their academic outcomes and enrichment opportunities. Whatever your aspirations may be, the entire Sixth Form team will work with you to ensure you undertake relevant enrichment experiences, helping you build strong foundations from which to secure excellent post 18 options.

## 2019 Leavers: Where are they now?

Economics, Statistics and Mathematics, [Queen Mary University](#) • Business and Management, [University of Kent](#) • Computer Science, [Goldsmiths University of London](#) • Music Journalism, [British & Irish Modern Music Institute](#) • Philosophy, Ethics and Religion, [University of Leeds](#) • Business Management (Marketing), [Middlesex University](#) • Coaching and Sport Science, [Nottingham Trent University](#) • Law, [University of Westminster](#) • Computer Forensics, [Middlesex University](#) • Computer Science, [City University of London](#) • Football Journalism, [University of Derby](#) • Social Work, [University of Leeds](#) • LLB Law, [London School of Business Management](#) • Biomedical Sciences, [Nottingham Trent University](#) • Journalism, [University of the Arts](#) • Applied Biosciences, [University of Coventry](#) • Fine Art, [University of the Arts](#) • Ancient History, [Kings College London](#) • Healthcare Science (Audiology), [Middlesex University](#) • History, [University of Aberdeen](#) • Content, Media and Film Production, [University of West London](#) • Graphic Design Communication, [University of the Arts](#) • Pharmacology and Physiology, [University of Westminster](#) • Art, [University of the Arts](#) • Psychology, [University of Essex](#) • Advanced Vehicle Engineering, [London South Bank University](#) • Childhood Studies, [University of Essex](#) • Accounting and Finance, [University of Hertfordshire](#) • Biological Sciences, [University of Essex](#) • Advertising and Marketing, [Coventry University](#) • Construction Management, [Nottingham Trent University](#) • Childhood and Youth, [University of Northampton](#) • Law, [SOAS](#) • Psychology, [University of Essex](#) • Engineering and Technology, [University of Portsmouth](#) • Financial Economics, [University of Essex](#) • Psychology, [University of Portsmouth](#) • Photography, [University of the Arts](#) • Coaching and Sport Science, [Nottingham Trent University](#) • Biomedical Science, [Middlesex University](#) • Information and Data Systems, [University of Bedfordshire](#) • Animation, [De Montford University](#) • Global Studies, [University of Essex](#) • Architecture, [University of Hertfordshire](#) • International Relations and Politics, [University of Portsmouth](#) • Business Management, [University of Essex](#) • Creative Writing and Media, [York St Johns University](#) • Pharmacy, [University of East Anglia](#) • Journalism, [Birmingham City University](#) • Mechanical Engineering, [University of East London](#) • Sport Psychology, Coaching and Physical Education, [London Metropolitan University](#) • Psychology, [University of Nottingham](#) • Biomedical Sciences, [University of Reading](#) • Architecture, [London Metropolitan University](#) • International Politics, [Brunel University](#) • History, [University of York](#) • English Literature, [University of East Anglia](#) • Psychology with Cognitive Neuroscience, [University of Leicester](#) • Law, [Brunel University](#)

# ENRICHMENT



“Students contribute to the wider community by raising funds for charity”  
OFSTED 2018

Formal public examinations and their results will be critical in your success and we know how important they are to your future. We never lose sight of this. However, we want students to leave St Aloysius’ College Sixth Form with more than just a set of outstanding academic results. We place a high priority on personal development and exposure to extra-curricular activities and experiences.

Increasingly employers and universities are seeking more than GCSEs and A levels; they are looking for interesting young people who can demonstrate a wide range of skills and knowledge. We want every Sixth Form student to have the chance to shine. Whenever there is demand for a new club or activity, we always try to find a way to make it happen.

St Aloysius’ College Sixth Form students will have the opportunity to engage in activities such as the following:

- Sports teams
- Outdoor & adventurous activities
- Music performances & productions
- Charity work for local, national and international organisations
- Student mentoring programmes
- Industry experience with local companies
- Lectures from industry specific professionals

Through these activities students can:

- Explore new skills and interests
- Become more self-sufficient
- Realise their creative potential
- Take responsibility, show initiative and develop leadership qualities
- Show good communication skills
- Contribute to the community
- Discover a hidden talent or develop a lifelong interest





# STUDENT LIFE

## Independent Study

The supervised study programme is an initiative to help Year 12 students manage their GCSE to A Level transition effectively and ensure they are on the right note with their personal study from the outset. It provides a silent environment to work in without interruption.

There is a library for Sixth Formers to use, containing a wide range of recommended reading, course texts, academic journals and newspapers to inform your studies. The librarian is always on hand to help you with any queries.

## Guest Speakers

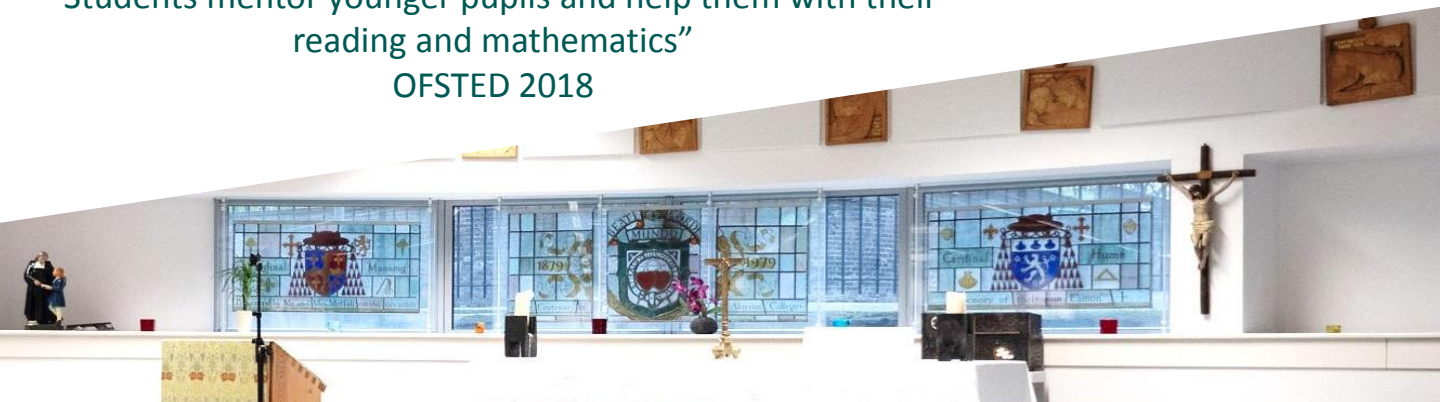
When students join St Aloysius' College Sixth Form, preparing them for the journey ahead is highly valued. We are aware that in less than two years time they will be living independent adult lives and need to be equipped with the knowledge and skills to take on the world. We, therefore, make great efforts to introduce these young people to global and national issues. With this in mind, guest speakers are invited in to present to the Sixth Form students in their professional area of expertise. The programme aims to stimulate students to consider intellectually challenging material and form opinions on topical issues. This will also increase the capacity of students to absorb knowledge in a university style lecture.

## Senior Students

The Sixth Form sets the standard for the rest of the school. As role models you will be looked up to by younger students who aspire to be like you. All students will be expected to live up to this challenge, in terms of their approach to work, attitude, conduct and code of dress. Senior Students will have a very high profile in the school; attending assemblies, organising events and performing duties around the school to assist staff in ensuring the whole school runs smoothly.

Anyone wishing to be a Senior Student needs to be nominated and write a letter of application. You will get further information about this during the induction days.

“Students mentor younger pupils and help them with their reading and mathematics”  
OFSTED 2018



# DRESS CODE



## **Business Dress Code**

As recognition of the Sixth Former's growing maturity and independence our dress code is based upon business principles. The dress code strikes a balance between some degree of individuality whilst recognising the importance of setting an example to the younger members of the school community, parents and visitors to the school.

We have a strict business dress code which cannot be compromised:

- A smart business suit – Black
- A smart business shirt/blouse – White
- Smart business shoes

### **Boys:**

- Business shirts should have a button down, or stiff collar - casual shirts are not permitted
- Smart V-neck cardigan/jumpers may be worn in the cold weather
- Smart business shoes

### **Girls:**

- Dark tailored jacket, skirt, trousers or dress. Skirts and dresses should be on or below the knee
- Only fitted blouses may be worn outside the skirt; all other blouses must be tucked in
- Jumpers and cardigans should be formal
- Shoes should be formal (no trainers, Vans or Converse)

St Aloysius' College retains the right to act as the final authority in the interpretation of the dress code.





# ENTRY REQUIREMENTS

## Pathway 1 Applicants (3 A Levels)

We expect Pathway 1 applicants to achieve 5 GCSEs at grades 5-9, with a minimum of a grade 5 in English Language or Literature and Mathematics, and the relevant subject specific entry criteria.

## Pathway 2 Applicants (BTEC Level 3 Course)

We expect Pathway 2 applicants to achieve 5 GCSEs at grades 4-9, with a minimum of a grade 4 in English Language or Literature and Mathematics, and the relevant subject specific entry criteria.

**To study any Sciences (Chemistry/Biology/Physics) you must have Grade 7s in those subjects and Combined Science pupils will need Grade 7-7.**

As specified above, applicants need to meet the entry criteria for the subjects they are applying for:

Subject (A Level)	Exam Board	Subject Specific Entry Requirements
Biology	AQA	Minimum grade 7 in Biology 6 in Maths
Business	AQA	Minimum grade 6 in Business 6 in English and Maths
Chemistry	AQA	Minimum grade 7 in Chemistry 6 in Maths
Computer Science	OCR	Minimum grade 7 in Computing 7 Maths
Economics	Edexcel	Minimum grade 6 in English 6 in Maths
English Language	AQA	Minimum grade 6 in both English Literature & Language
English Literature	AQA	Minimum grade 6 in both English Literature & Language
Fine Art	OCR	Minimum grade 6 in Art (portfolio may be required)
French	Edexcel	Minimum grade 7 in French (unless native speaker)
Geography	AQA	Minimum 6 in Geography 6 in English and Maths
Politics	Edexcel	Minimum grade 6 in Maths and English or History
Graphics Communication	OCR	Minimum grade 6 in Art (or related subject such as Graphic Design)
History	OCR	Minimum grade 6 in History 6 English and Maths

Subject (A Level)	Exam Board	Subject Specific Entry Requirements
Maths	Edexcel	Minimum grade 7 in Maths
Music Technology	Edexcel	Minimum grade 6 in Music
PE	OCR	Minimum grade 6 in PE and minimum grade 6 in Biology
Philosophy & Ethics	AQA	Minimum grade 6 in RE 6 in English and Maths
Physics	AQA	Minimum grade 7 in Physics 6 in Maths
Psychology	AQA	Minimum grade 6 Psychology (if previously studied) 6 in English and Maths
Sociology	AQA	Minimum 6 in English 6 in another humanities subject
Spanish	AQA	Minimum grade 7 in Spanish

## BTEC Level 3 Courses (BTEC National Extended Diploma)

<b>BTEC National Extended Diploma in Business</b>	EITHER Merit BTEC Business OR Grade 5 GCSE Business (if studied)
<b>BTEC National Extended Diploma in Sport</b>	EITHER Merit BTEC Sports OR Grade 5 GCSE PE (if studied)
<b>BTEC National Extended Diploma in Science</b>	EITHER Merit BTEC Applied Science OR Grade 5 GCSE Science/all Triple Sciences.



**Key Dates**  
**Apply Online Now**

**Open Evening**  
Tuesday 3<sup>rd</sup> December 2019

**Application Deadline**  
Friday 31<sup>st</sup> January 2020

**ST ALOYSIUS'**  
**COLLEGE**

Hornsey Lane, London, N6 5LY

For  
Further  
Information

Email:  
[enquiries@sta.islington.sch.uk](mailto:enquiries@sta.islington.sch.uk)

Call:  
0207 561 7800



@StAloysiusC

